


HAMMERSTEIN & DAOSA AFRICA





AND LO, UPON THIS NEW LAND
FROM ACROSS THE SEA I CAME,
IT WAS VAST
AND UNCORRUPTED.
I PLANTED MY FEET ON
TERRA FIRMA,
AND MY SOUL TOOK ROOT.
HERE I GROW NOW AND BARE THE
FRUIT OF MY LOVE.

UND SIEHE, IN DIESEM NEUEN LAND,
VON JENSEITS DES MEERES KAM ICH HER,
ES WAR WEIT
UND UNBERÜHRT.
ICH PFLANZTE MEINE FÜSSE AUF
FESTEN BODEN,
UND MEINE SEELE SCHLUG WURZELN.
HIER WACHSE ICH NUN UND TRAGE
DIE FRÜCHTE MEINER LIEBE.



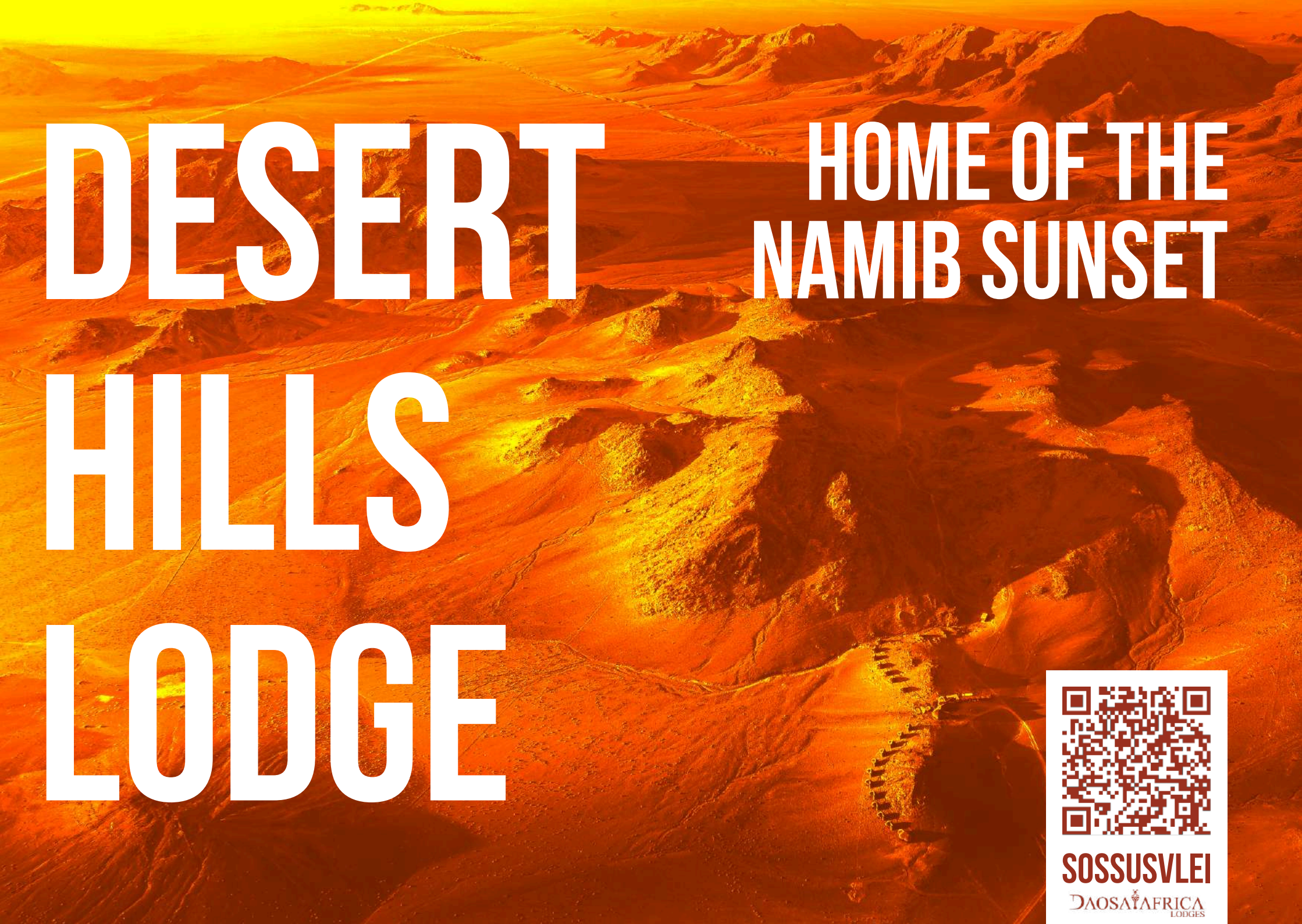
WELCOME TO HAMMERSTEIN & DAOSA AFRICA LODGES

Hammerstein Africa Lodges is a curated collection of properties dedicated to delivering exceptional service, crafting incomparable experiences, and ensuring lifelong memories for all its guests. Backed by decades of hospitality experience, it continues to deliver unique moments with intentionality and precision. The Hammerstein Africa Lodges brand is divided into two distinct collections; Hammerstein lodge group and Daosa lodge group.

The Hammerstein Africa Lodges collection includes Hammerstein Lodge (the taproot to our tree!), and Etosha Omusati Lodge (the leafy top!). These lodges are equipped to handle slightly bigger groups, and puts forth a hearty dinner and vitalic breakfast buffet and homely accommodation.

The second collection, Daosa Africa Lodges, is a premier luxury branch of Hammerstein Africa Lodges. Daosa includes Desert Hills Lodge, We Kebi Safari Lodge and Ocean House Guesthouse. The allure to these establishments are their additional luxury accommodations and service. Spacious, welcoming and unique architecture will entice your senses. Experience succulent plated dinners at Desert Hills and We Kebi. Ocean House Guesthouse does not serve dinner, but like the other two present a lavish mouth watering Namibian buffet breakfast.

We invite you, your clients, your friends, and your family to come enjoy with us the riches we have been entrusted with. See, taste, smell, hear and feel the mountains, the sand, the wind, and the magnificent southern skies; from the rhythmic foamy waves to the quiet baking savanna and crisp desert air.



DESERT

HILLS

LODGE

HOME OF THE NAMIB SUNSET



SOSSUSVLEI

DAOSATAFRICA
LODGES

DESERT HILLS LODGE

Desert Hills lodge is a premium luxury lodge and home of 'the Namib sunset'. The lodge comprises of 18 individual huts and one two-bedroom family unit. Guests can relax around the bar, refresh themselves at the pool or take their meals in the breath-taking restaurant, overlooking the magnificent 'desert hills'.

20 EN-SUITE TWIN ROOMS / 4 GUIDE ROOMS

- 1 Family Room with 2 Twin Rooms
- 18 Twin Rooms
- 3/4 beds with high quality linen and mattresses
- 180° Unobstructed sunset/western desert view
- Aircon
- Patio Furniture
- Cupboard and Safe
- Wi-Fi (Limited)
- Shower Gel, Shampoo, Conditioner, Body Lotion, Insect Repellent
- Coffee/Tea Station
- Mini Bar
- Hairdryer

LODGE AMENITIES

- Swimming pool and towels
- Free Wi-Fi around bar and lounge
- Restaurant
- Open Coffee and Tea Station

ACTIVITIES OFFERED

- Sossusvlei and Sesriem excursions
- Cocktail Sundowner
- Sundowner Drive
- Light Hiking
- Meat and Wine evenings
- Weddings or special functions (on request)





SOSSUSVLEI
DAOSA AFRICA
LODGES



WE KEBI

**LIFE
ABUNDANT**

SAFARI

LODGE



SOSSUSVLEI

DAOSA AFRICA
LODGES



Coming down from the escarp of Southern Namibia on the C19, We Kebi Safari Lodge should be everyone's first destination. There are ample activities to choose from, or just relax on the veranda deck and watch rhinos lazily grazing around the waterhole.

14 EN-SUITE TWIN ROOMS / 3 GUIDE ROOMS

- 1 x One Bedroom Family Unit (Double + 2Singles)
- 1 x Two Bedroom Family Unit (2Twin + 2Twin)
- 9 x Twin Rooms
- 2 x Triple Rooms
- Unobstructed mountain views
- Aircon
- Patio Furniture
- Cupboard and Safe
- Shower Gel, Shampoo, Conditioner, Body Lotion
- Coffee/Tea Station & Mini bar
- Hairdryer

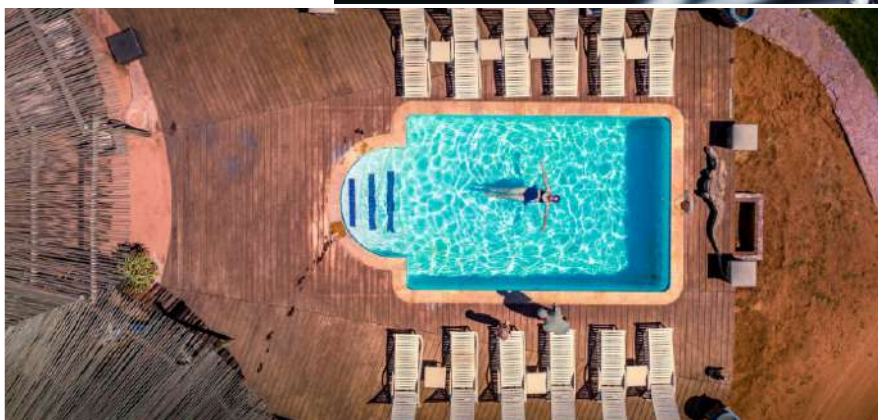
LODGE AMENITIES

- Swimming pool and towels
- Free Wi-Fi in lounge area
- Restaurant & Free Coffee Station

ACTIVITIES OFFERED

- Sossusvlei and Sesriem excursions
- Sundowner Drive
- Nature Drive
- Guided Hikes
- Weddings or special functions (on request)

Over the past few years We Kebi has seen many happy couples enter into matrimony, as the lodge serves as an ideal wedding and function location.





OCEAN HOUSE GUESTHOUSE

SEASIDE
VITALITY



SWAKOPMUND

DAOSA AFRICA
LODGES

OCEAN HOUSE

GUESTHOUSE

Ocean House Guesthouse, in the vibrant town of Swakopmund, is the perfect break away for those seeking vitality, rejuvenation, and fresh salty air to put the hop back in their step. Walking distance to the Swakopmund Dome, Crossfit Swakopmund, and seaside pathways ideal for dawn runs, along with our in-house yoga room, makes it the perfect place for the health-conscious traveller.

10 EN-SUITE TWIN & 5 DOUBLE ROOMS

- 2 Sets of interleading rooms for families
- Wi-Fi
- Air Conditioning throughout
- Patio Furniture
- Cupboard and Safe
- Shower Gel, Shampoo, Conditioner, Body Lotion
- Coffee/Tea Station & Mini bar
- Hairdryer

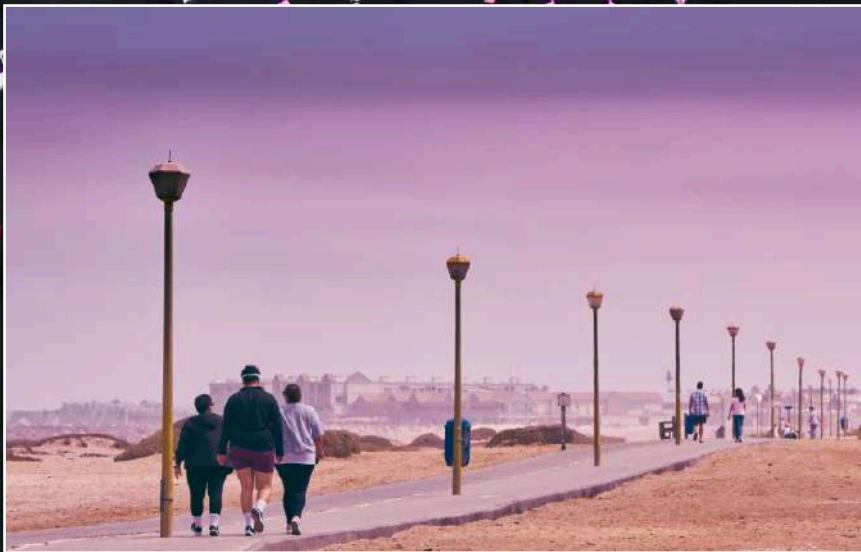
GUESTHOUSE AMENITIES

- Patio and Sundowner Terrace
- Reading Lounge
- Wi Fi

ACTIVITIES OFFERED

- (We do not offer any activities, but can gladly help you book the following Swakopmund adventures:
- Boat Cruises (Weather permitting)
- Boat Fishing (Weather permitting)
- Angling excursions
- Sandwich Harbour Tours
- Camel Rides, Dune Boarding, Quad Bikes
- Fatbike tours







HAMMER STEIN LODGE

TAVERN ON STONE



SOSSUSVLEI

Hammerstein Africa
Lodges



Hammerstein Lodge is the birthplace of our legacy and has been a bedrock of travel in the Namib for decades. On arrival at our heritage lodge, wind down at the Tavern on Stone Beergarden and quench your thirst after an arduous day's travel. Enjoy the convergence of cultures as you sip your crisp cold draught to plan the rest of your coming adventure. Head to the great hall and feast, sit by the tavern bar and regale fellow travelers with stories of globe-trotting adventure, or sink into the cool blue waters of the pool.

70 EN-SUITE TWIN ROOMS & 6 SELF CATERING ROOMS

- Patio Furniture
- Cupboard
- Shower Gel, Shampoo, Conditioner, Body Lotion
- Hairdryer

LODGE AMENITIES

- Bar & Restaurant with dinner and breakfast buffet
- Wi-Fi in restaurant and bar
- Free coffee/tea station in the bar
- Pool and towels
- Children's play area

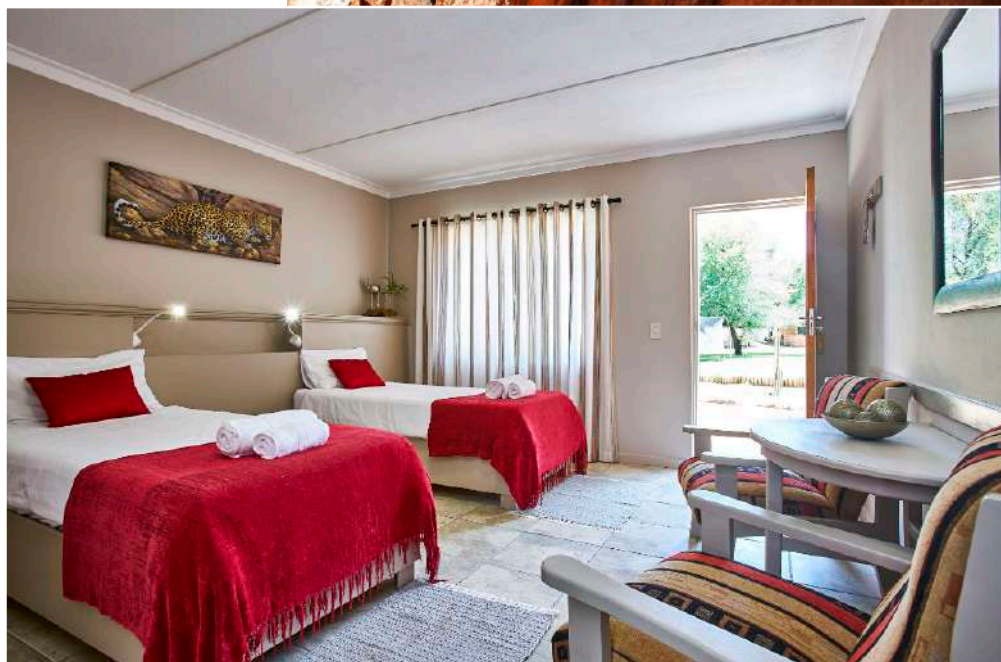
ACTIVITIES OFFERED

- Sossusvlei and Sesriem excursions
- Nature Drive
- Guided Hikes
- Weddings or special functions on request

CAMPING - (NEW SITE END 2025)

- Power points
- Barbeque spaces
- Shared kitchen & ablution facilities

Hammerstein Lodge will be undergoing upgrades during 2025/6. Please bare with us during this period, and be assured that we will still provide the great service we are known for, while keeping disruptions to a minimum.







ETOSHA OMUSATI LODGE

VERDANT
VENTURE



ETOSHA

Hammerstein  Africa
Lodges

ETOSHA OMUSATI LODGE

Etosha Omusati Lodge is our new treasure in the central north of Namibia. Located 400 kilometers north of Windhoek and only fifteen kilometers south of the Etosha Anderson gate. Ideally situated for daily ventures into Etosha National Park offering incredible photo opportunities and spectacular wildlife.

20 EN-SUITE TWIN BUSH CHALETs & 10 BUNGALOWS

- Patio Furniture
- Air Conditioning in all rooms
- Safe
- Shower Gel, Shampoo, Conditioner, Body Lotion
- Hairdryer

LODGE AMENITIES

- Bar
- Restaurant with dinner and breakfast buffet
- Limited Wi-Fi in restaurant and bar
- Free coffee/tea station in bar

4 CAMP SITES

- Shared mens and ladies ablution
- Each campsite has its own braai, basin and countertop
- Shade roof/awning with seating area
- Power outlets

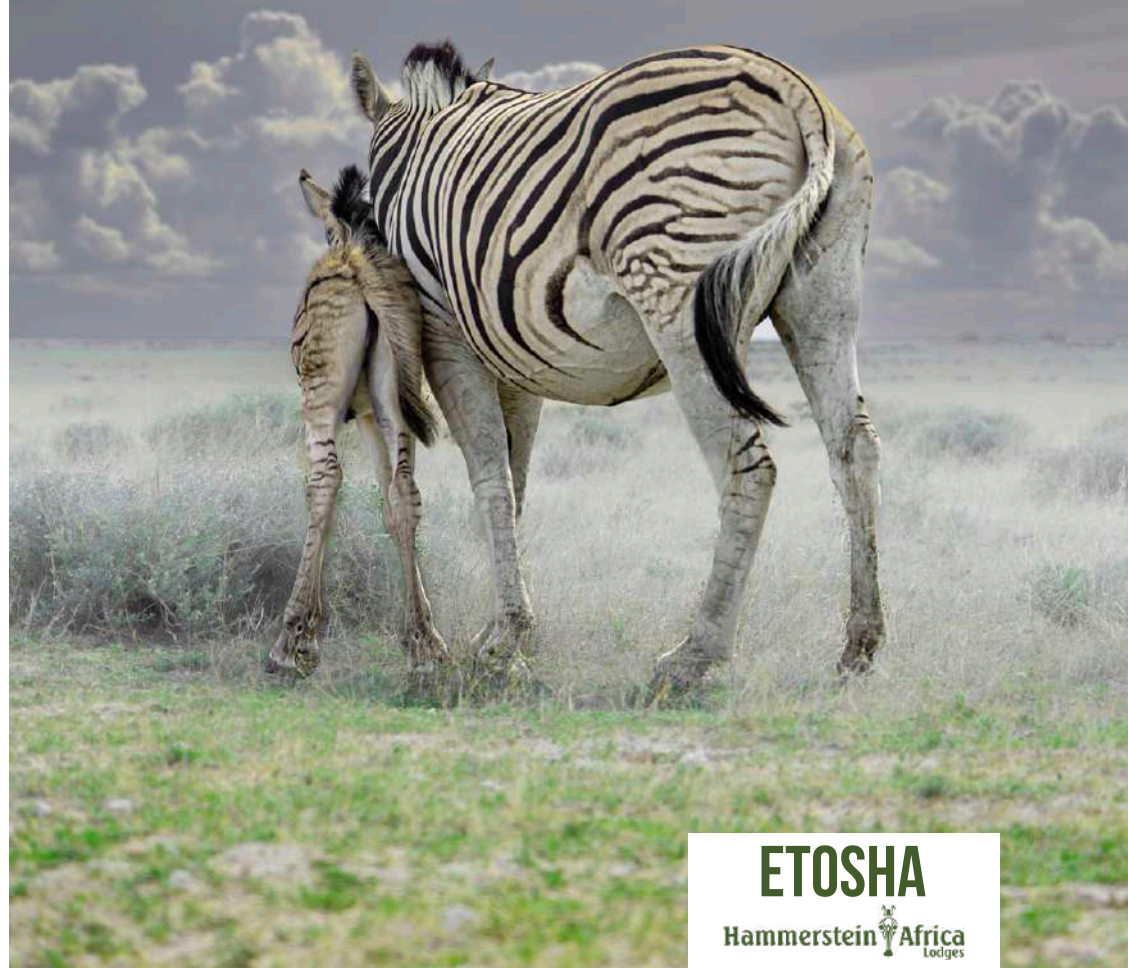
ACTIVITIES OFFERED

- Full Day Guided Etosha Safari
- Etosha Half Day Safari



ETOSHA

Hammerstein Africa
Lodges



ETOSHA

Hammerstein Africa
Lodges



Reservations

+264 81 146 5823

bookdhl@hammersteinafrica.com
bookwekebi@hammersteinafrica.com
bookocean@hammersteinafrica.com
omusati@hammersteinafrica.com
hammerst@hammersteinafrica.com

Desert Hills Lodge

-24.6072222°, 015.9591667°

C19 Road Sossusvlei

We Kebi Safari Lodge

-24.9189677°, 016.2350092°

C19 Road Sossusvlei

Ocean House

-22.6634763°, 014.5276136°

22 Richthofenstr, Swakopmund

Etosha Omusati Lodge

C38 Etosha

-19.4551667°, 015.9074167°

Hammerstein Lodge

-24.8734880°, 016.1781578°

C19 Road Sossusvlei

General Enquiries:

bookings@hammersteinafrica.com

